

Telford Methodist Circuit Newsletter

27th March 2025

Bread Church at Dawley Christian Centre grows bigger every month!



Yesterday at Bread Church, we had even more people come to join us as we made hot cross buns, as well as the usual small loaves that we make each time.

It's a fabulous way for people who may not usually go to church on a Sunday to

experience church in a new way.



We talked about Lent and shared in prayers together. If you'd like to experience Bread Church for yourself, with the thought of possibly trying it in your own church, why not come along to our next one. Our Bread Church is on the last Wednesday and Saturday of the month (apart from May). Please get in touch for more details.

Dear All,

Cartway Church is holding a soup lunch on the following dates: **Friday March 28th; Friday April 25th and Friday May 30th** from 12.00 - 2.00pm.

There is no charge but we will be grateful for donations which will go to support a Ghanaian Community Health Project.

Everyone is welcome and we look forward to seeing you at any of the times.

The soup will be served upstairs, in the church.

Blessings to all,

Ruth

The Dawley Christian Centre has a new roof! Severn Roofing worked very hard last week and did the whole roof in 5 days! Thankfully we were blessed with good weather and we were able to have it done earlier due to a cancellation.

Thank you very much to the people in the Circuit who all helped us to get the work done.... It really is very much appreciated! Long may we all continue to serve our wonderful God!



Extra-Special All Age Service in July

In July we will have some special visitors to our Circuit from Operation Mobilisation. They are offering to lead one All Age Service, engaging all your congregation in what God is doing around the world, with an interactive programme full of sights, tastes and sounds, stories and insights from their personal experiences serving in Asia.



If you would be interested in hosting this extra-special All Age Service at your church (either instead of a Local Arrangement or your usual All Age Service), please reply to me (Sharon) by Thursday 3rd April, with the following information:

Name of Church:

Person to contact:

Contact email address or mobile number (preferably with WhatsApp):

Does your church already have regular All Age Services? Yes/No

***Approximately* how many children, youth and adults would you normally expect on a typical Sunday (at your All Age service if you have one)?**

Under 5s:

Primary School ages:

Secondary School ages:

Adults:

Are you open to inviting people from other churches to this service? Yes/No

If yes, what is your maximum capacity in the church? :

Would you also be able to provide tea/coffee or light refreshments? Yes/No

Any other comments:

Preferred Date (select one / delete others): 6th July / 13th July / 27th July

Please note, that they only have capacity to lead ONE service. The service CAN NOT be livestreamed. If you are interested in hosting, **please reply by Thursday 3rd April**, so that we can confirm location and date for the next Plan. We will be in contact to discuss service plans and arrangements.

Thank you

Eco News from the Telford Circuit



Last week we made a circuit commitment to care for God's creation. So how does that fit in with what is going on within the wider Connexion?

The Methodist Commitment to Care for our Planet

As you will definitely have heard, the Methodist Church in Britain seek to be a *Justice Seeking Church*. In seeking justice for all, five priorities have been identified which are: Poverty, Peace, Discrimination, Refugees and Climate. By committing to care for our common planet we will have an impact on all these areas of priority.

Poverty. According to the World Bank, by the time many of the teenage climate activists of today are in their late 20s, climate change could force an additional 100 million people into extreme poverty. In addition, by 2050, the International Food Policy Research institute estimates a 20% increase in malnourished children compared to what we would see without climate change. (*Excerpt from Unicef Article, August 2022*)

Peace. Climate change exacerbates inequalities and compounds grievances, making peace more fragile.

Discrimination. Climate change disproportionately affects those experiencing poverty.

Directly: cheaper housing is often lacking insulation or built in areas more susceptible to extreme weather.

Indirectly: extreme weather affects crop yields leading to resource scarcity which will drive up consumer prices. This disproportionately affects those already struggling to make ends meet.

Refugees. According to the International Displacement Monitoring Centre an annual average of 21.5 million people were forcibly displaced each year by weather-related events – such as floods, storms, wildfires and droughts – between 2008 and 2016, and the figure reached a record 32.6 million in 2022.

Prayer

by Novette/Headley (Chair of the Birmingham District)

Faithful God, open the eyes of our hearts to recognise your presence in the seemingly hopeless circumstances of life. Help us not to give up hope in the treasures of love, integrity and justice even when the news is dismal; when our institutions seem powerless against the forces of indifference and destruction; when people seem incapable of doing or even imagining goodness. Deep in the darkness of the soil, O Lord, you are feeding the shoots of a new community of hope. Amongst unseen communities, you are inspiring men, women and children to dream of, and make real, a new world that is courageous, gentle and just. Help us to value your way of being that brings true richness to life – the way of Jesus Christ. May we be faithful stewards of your creation, ensuring that the waters continue to flow in abundance, purity, and peace. Amen

Dear Friends,

I do a lot of "extreme" indoor rowing.

From 11th May, a group from my rowing class, will each be rowing 7 marathons in 7 days in aid of MND and Severn Hospice.

We are being encouraged to seek sponsorship from friends and contact groups etc.

If anybody is able to sponsor me for this event it will be greatly appreciated. I have attached the QR code for the giving page, but if anybody is not familiar/able to use this method, please let me know so that alternative arrangements can be made.

Thank you.

Dave

Dave Williams from Admaston Methodist Church

(Please contact Circuit office for Dave's contact details—thank you)



Pray with us today.

You are the One, the Holy One,
who looks on all you have made, with love.
You gaze at me, and your faithful kindness overwhelms me.
I fall silent before you, my words stalling,
as my heart breaks open and pours out my thanks, my delight in you.
The more I gaze back at you,
the more I see through your eyes;
I am born again in your devotion to your creation.
Let my words fall before you,
but grant me the words and the acts of love
you long for me to have for your world. Amen



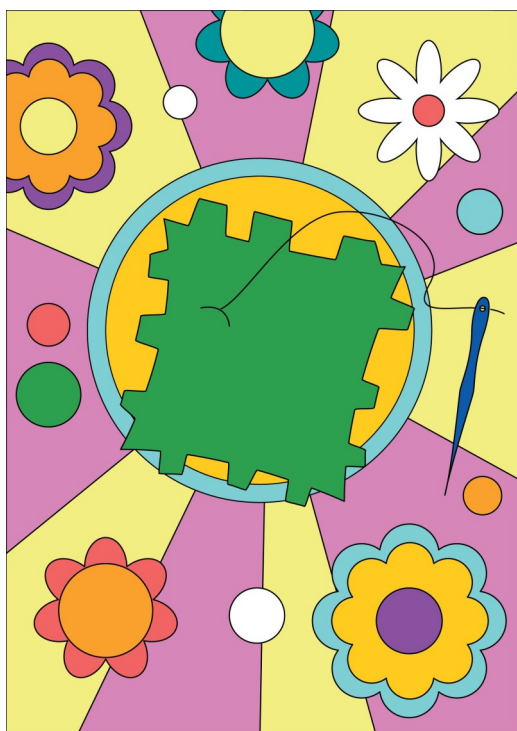
“We had to celebrate and be glad, because this brother of yours was dead and is alive again; he was lost and is found.”

This week’s Bible study from Tim and friends looks at **Luke 15:1-3, 11b-32**. You might want to read it before you watch the video:



Please click on the link below:

[Bible Study – Week 4: Luke 15:1-3, 11b-32 | Soul Food](#)



May I know myself loved, healed, accepted and forgiven, just as I am.

And may I be a means of grace for other people too, Lord. Amen.

Every blessing,

The Soul Food team.



We are excited to share our theme for Lent 2025, 'Soul Food'

In the wilderness, Jesus reminded us that people don't live by bread alone. Each week during Lent 2025, we'll reflect on what sustains us, based on the lectionary Gospel passage for Sunday.

[Lent 2025: Soul Food - The Methodist Church](#)

Eternal God,
give us insight
to discern your will
for us,
to give up what
harms us,
and to seek the per-
fection we are
promised
in Jesus Christ our
Lord.
Amen.

The Third Sunday of Lent

Please soak these people in prayer.

Together we can make a difference!

Prayers please for the family and friends of Mavis Lamb who is in Princess Royal Hospital and isn't very well at all.

Please pray for Wes and James who are brothers and are both are having treatment for cancer at the same time. The rest of their families are struggling with their illness too.

Lord Jesus, who went about doing good and healing all, we ask you to bless our friends who are sick. Give them the strength in body, courage in spirit, and patience in pain. Let them recover their health, so that, restored to the Christian community, they may joyfully praise Your name, for You live and reign for ever and ever. Amen.



Circuit Prayer Space

Circuit Prayer Space on a Monday morning at 8:30am.

Val Smith is inviting you to a scheduled Zoom meeting.

Topic: Circuit Prayer Meeting

Time: This is a recurring meeting Meet anytime

Join Zoom Meeting

<https://zoom.us/j/96716434790?pwd=RTZZa210Q1ZOWCtLTWk3NHoyWDVlQT09>

Meeting ID: 967 1643 4790

Passcode: 355690

God loves you
unconditionally, no strings attached.
That's the good news.

Lent



Advanced Safeguarding Course

Stephanie Bradley, Assistant District Safeguarding Officer is doing Advanced Safeguarding Training in the Telford Circuit on **Saturday 24th May 2025**, starting at 10am at **Wellington Methodist Church**.

If you are unsure as to whether you are due to attend a course please contact either your Church Safeguarding Officer or Sharon in the Circuit Office on 01952 505108.

Registration will be from 9:30am with a prompt start at 10am, finishing around 1pm.

Please book directly with Stephanie by calling 07494 734 473 or email: StephanieBradley@birminghammethodist.org.uk

Thank you.

SAFEGUARDING
Creating Safer Space



Please get in touch if you have something to share.



Contact:

circuitssupport@telfordmeth.org.uk

or 01952 505108

Oakengates United Church
Saturday 29th March
9.30 – 12.30

Spring Fayre

Cakes, Plants, Books,
Nearly New, Aladdin's Cave,
& Name the Rabbit.

Easter Egg Tombola & Raffle
Bacon Sandwiches, Toast,
Tea & Coffee

Admission
Free



LEEGOMERY METHODIST CHURCH

(Hadley Park Road)

INVITES YOU TO

A SPECIAL FAMILY SERVICE FOR MOTHERING SUNDAY



Sunday 30th March

At 11 am

To be led by Jo Kudlacik

All children attending will have the chance to make a special gift for their mum and be given some flowers



Everyone Welcome

Mothering Sunday Service

30th March

10:30am

Thank God for the gift of
Mothering.



Spring Craft

Fayre

Saturday 5th April

11:00 - 14:00



- FREE kids craft corner,
- Homemade Cakes, Tea & Coffee,
- Fundraising Raffle & Tombola,
- Several Independent Stalls Including:
 - Crochet Characters,
 - Prints & Canvases,
 - Handmade Gifts,
 - Artificial Flowers,
 - Jewellery, Keyrings & Trinket Boxes,
 - Bath - bombs & Soaps,
 - And Much, Much More!



Hadley Park Community Room
At the rear of:
Leegomery Methodist Church,
Hadley Park Road,
TF1 6QG

**Come along and join us for our Lent Course with
Lunch and find out more about Jesus!**

Dawley Christian Centre

Wednesday 5th, 12th, 19th & 26th March

And 2nd and 9th April between 12:30-2:30pm

The Lent course is based on Nick Fawcett's book, Decisions Decisions.

We make decisions every day - big and small, unimportant and life changing, good decisions and bad, easy and hard to make. We can ask God for his help and search the Scriptures for guidance, but ultimately decisions are ours alone. This is the essence of free will, and also the essence of Lent. Like Jesus in the wilderness, we must wrestle with the issues of life and the challenge of faith.

Exploring different aspects of life's decisions through biblical passages and personal experiences, the six weekly sessions include prayers, activities, discussion questions, meditations, suggestions for further reading and ideas for action. This course offers an opportunity to reflect on the challenge of Lent and the decisions God calls us to make.

ALL ARE WELCOME

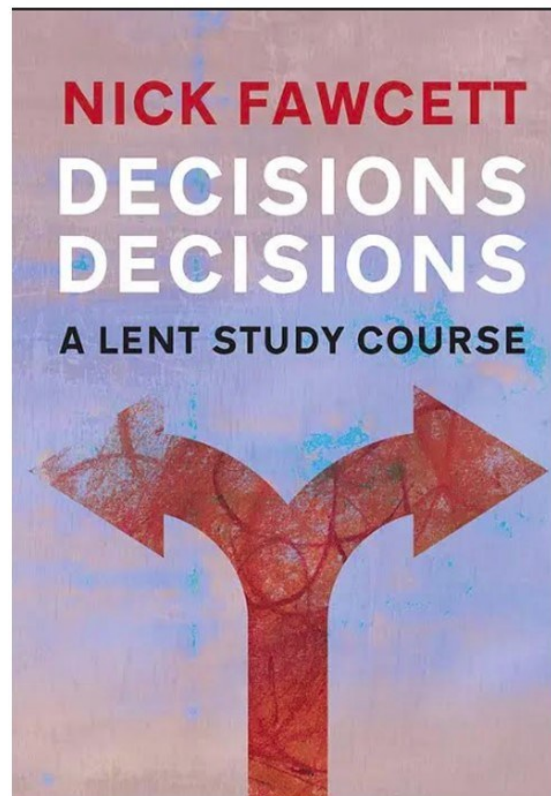


Table Top

SALE

DAWLEY CHRISTIAN CENTRE

on Friday 11th April 2025

from 9 am – 12 noon

**Come along and pick up a
bargain.**

**To book a table please call
01952 505108.**

Easter MESSY Church

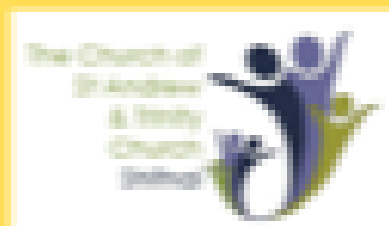
Good Friday

18th April

10:30am - 12:00pm

St Andrew's Church

Come and join in all the Easter Messy fun of singing, worship, craft, and a delicious hot cross bun!



Reaching out together to share God's amazing faith, hope and love.

EASTER DAY



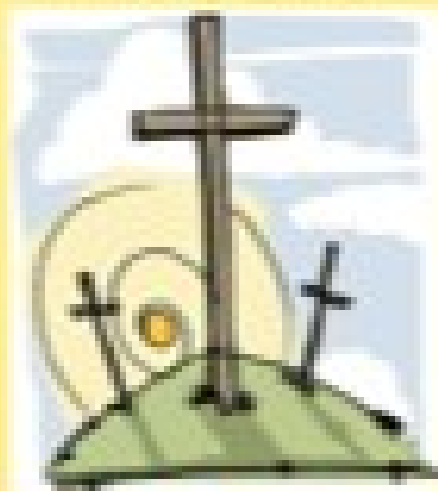
Sunday 20th April

10:30am

St Andrew's Church

Outdoor Service

Weather permitting. Bring your outdoor chairs.
In Church if wet.



He is Risen!



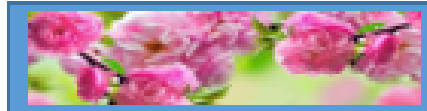
Wellington Methodist Church

Easter



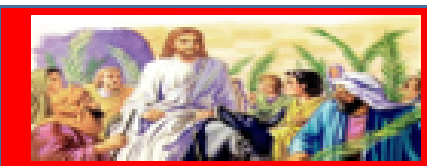
Services

Mothering Sunday



Sunday March 30th.
10.15am All Age worship
led by Mr. John Parkin

Palm Sunday



Sunday April 13th.
10.15am Service
led by Rev. Roger Dunlop
Palm crosses will be distributed.

Maundy Thursday



Thursday April 17th.
7.30pm Communion in the form of an
AGAPE MEAL
Led by Rev. Roger Dunlop

Good Friday



Friday April 18th
10.30 Service
led by Rev. Roger Dunlop
Hot cross buns following the service.
12noon Walk of Witness

Easter Sunday



Sunday April 20th.
8.45 am Communion in an Easter
Breakfast setting. Rev. Roger Dunlop.
10.15 service
Led by Mr. David Corden
Please bring flowers to the service to
dress the cross.

All Welcome



Telford Methodists Circuit project with Ajumako Osedzi



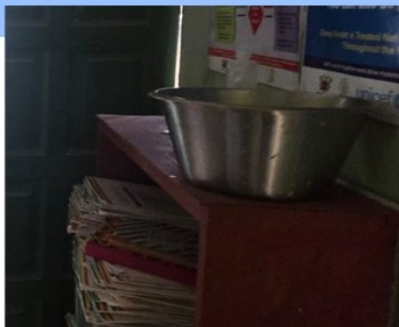
Community Health Centre March Update

What is needed:

- Hospital beds - A sink for the delivery room
- A wheelchair - A larger fridge/freezer
- Chairs for the nurses
- Delivery equipment

Total cost: £3500—£4000

(depending on exchange rates)



GREAT NEWS: We have raised just over £4,015 so far... let's keep going!

Please consider donating your Easter Offerings this year so that our fundraising can start making a difference by the summer!



Bereavement cafe

A support group looking forward, following loss.

Thursday February 6th

Thursday March 6th

Thursday April 3rd

10:30am - 12:00pm

The Trinity Centre, Victoria Road, Shifnal

Offering support, understanding & empathy

A small group brought together through loss.

We offer a relaxed, friendly and safe environment to talk with others, share memories and make new friends.

Everybody welcome

For further information contact Claire: 07955 688627



HeartSpace on Sundays 10:30am

Upcoming dates:
Sunday 16th February
Sunday 16th March
Sunday 27th April

Do come along!

**Relaxed contemporary worship
at the Trinity Centre, Victoria Road,
Shifnal**



All you keen or would be bakers please
Join us for Bread Church at
Dawley Christian Centre

On Wednesday 26th March 2025
between 1-3pm

And Saturday 29th March 2025
9:30-1:30pm (with a light lunch)

ALL ARE WELCOME



Everything will be ready for you to make your
own bread and it's FREE!

Please come along and give it a go.

You are warmly invited to join us for the official
opening of

**Dawley Christian Centre
Community Sensory Garden**

On 9th May 2025 between 1:00-3:00pm

**Our garden has been designed to evoke the five senses: sight,
sound, touch, taste and smell. It's a place to relax.... or if you
prefer, you are welcome to pick up a trowel and do a bit of
weeding. All are welcome.**

Sponsored by:



**The
Grimmitt
Trust**



The **Methodist** Church



**Telford & Wrekin
Co-operative Council**

Who Cares? An introduction to pastoral care



Who Cares?

In response to Our Calling, Methodist people are to help others to grow and learn as Christians, through mutual support and care.

Who Cares? is a series of four 2-hour online sessions that introduces participants to pastoral practice.

- Session 1: Introduction to Pastoral Care
- Session 2: Discipleship and Hospitality
- Session 3: Listening and Prayer
- Session 4: Pastoral Care in Difficult Times

The **Methodist Church** 

In response to Our Calling, Methodist people are to help others to grow and learn as Christians, through mutual support and care. *Who Cares?* is a series of four 2-hour sessions that introduces participants to the possibilities of pastoral care – creating appropriate environments and developing practices that welcome, support and care for others in their role. It draws on insights and underpinning knowledge in the areas below:

Session 1: Introducing Pastoral Care (4/6)

Session 2: Welcome and Hospitality in Pastoral Care (11/6)

Session 3: Listening and Prayer in Pastoral Practice (18/6)

Session 4: Care in Difficult Times and Self-care in Pastoral Practice (25/6)

All sessions will run from 7-9pm.

Link to [book](#).

DATE

04 June - 25 June

TIME

7:00pm - 9:00pm

ONLINE

This is an online event at On Zoom [Go to event website](#)

TAGS

[Pastoral Care](#)

CATEGORIES

[Open to everyone](#)

ORGANISER

[James Devenish](#)
devenishj@methodistchurch.org.uk
[07799902567](tel:07799902567)

Event website link:

[Who Cares? An introduction to pastoral care Registration, Wed 4 Jun 2025 at 19:00 | Eventbrite](#)

JUN
4

Who cares? Training
for Pastoral Care (4
sessions)

By James Devenish

Bibles Studies in the Circuit

Admaston meet on 2nd Tuesday of the month between 10-11:30am. They currently meet in the home of one of the church family but if the numbers increased they would be happy to transfer the bible study to church.

Cartway, Bridgnorth has 3 bibles study groups.

Shambles Group meet on 2nd Monday of the month at 10:30am

Orchard House Group meet on 3rd Monday in the month at 10:30am

Greenfields Group meet 3rd Tuesday in the month at 2pm.

Dawley - Bible study group meets for two 5-6 weekly sessions each year. One during Lent the other during Advent.

Dunwell - has a bible study before church service each Sunday which (service starts at 10am)

Oakengates Bible Reflections Group meet for two series of 5-6 weekly sessions each year. One of these is in Lent and the other in the autumn.

At present they meet in homes on a Wednesday afternoon (2-3:30pm) and the next session will be their Lent Study starting on Wednesday, 12 March 2025. The venue and the topic are both yet to be confirmed.

If anyone wants to attend, they should contact Andrew Evans on email andrew.evans20@btinternet.com or telephone 01952 292684.

As they usually meet in someone's home, we do not include the venue in general publicity.

T 01952 292684

Online Courses: Monday afternoon at 1:30am, Monday evening at 7:30pm and Wednesday evening at 8pm. Please contact the Circuit office for the Zoom link. All are welcome.





The Church of
St Andrew
& Trinity
Church
Dorset



Dementia
Friendly Church

Reaching out together to share
God's amazing faith, hope and love.

Forget me not Group

for people affected by dementia.

Third Thursday of the month at 2:00pm

Come and join us - there's a warm
welcome and a friendly atmosphere.

For more information, or for if you want to have a
conversation about memory difficulties or
dementia, contact Sarah Thorpe on 07983 248949 or
sarah.thorpe121@gmail.com

VOLUNTEERS WANTED

LEEGOMERY METHODIST CHURCH

Are looking for volunteers to assist

With the Children and Young peoples activities at the Church

If you could spare an hour or so on a regular or occasional basis, or know of someone who might be interested

please contact:

Shirley via email Shirley.stevens@stevens92.plus.com

Or

Rev Roger Dunlop

roger@telfordmeth.org.uk

For further information

VOLUNTEER



2025

2025



Everyday Welcome

**We will re-open on Monday 13th January
at St Andrew's Church.**

**Wishing all our visitors and volunteers a blessed
and Happy New Year, and looking forward to
providing a warm welcome for everyone in 2025.**

Open Monday, Wednesday, Thursday, Friday
10:30am - 2:00pm

Tuesdays 10:30-12:30pm

Come and join us for a friendly chat &
refreshments. Delicious light lunches served
from 12 Noon each day except Tuesday.

It's free. Donations welcomed!

**Pop in for a warm
welcome at our**



Cosy Café



Every Monday from

7th October

10.30 to 12.30

Meet friends and chat

Refreshments provided

Admaston Methodist Church,

Bratton Road, Admaston.

TF5 0AH

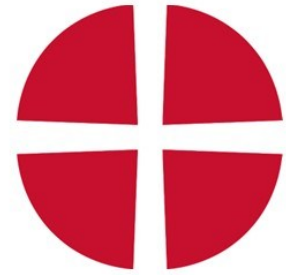
Stay & Play Under 5's Playgroup

at Dawley Christian Centre

High Street

Dawley

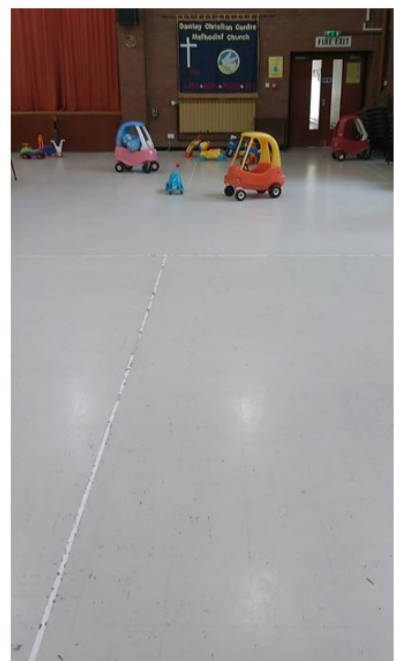
TF4 2EX



Every Monday & Tuesday from

9:30-11:30am.

We have lots of space and plenty of toys so
bring the kids and let's make some noise!



Coffee Morning at Cartway Methodist Church, Bridgnorth

On the 1st Saturday of each month between 10am –12 midday there is a Coffee Morning at Cartway Methodist Church.

There's going to be a great raffle,.

All are welcome.



Wellington Methodist Church

Are having All Age Drop-in Craft Sessions on the second Saturday of each month.

The sessions are FREE and start at 10am-11:45am.

You are welcome to drop in any time.

Everyone is welcome.



Coffee Mornings at Horsehay

**Every Wednesday:
10.30am - 12.00 noon**

**Join us for tea/coffee,
fellowship and lots of
chat and laughter!**



Ladies' Fellowship at Horsehay Second Tuesday of each month

in the vestry @2.30pm

ALL WELCOME - BRING A FRIEND!

Painting for Pleasure at Horsehay Methodist Church

Informal art groups (no tutor, but lots of chat and helping each other with tips and techniques). Whatever your skill level, if you enjoy drawing and/or painting, why not come and join us? **Thursday and Friday mornings** 10.00 - 12.30. £5.00 per session.

Wool Wanted

If anyone has any spare balls of wool they don't need, can you let Sharon (01952 505108) in the Circuit office know please?

At Dawley we are making knitted and crocheted blankets for the dementia patients at the Princess Royal Hospital.

The colourful blankets help patients, particularly those with dementia, to find their way back to bed more easily – and also see the edge of the bed more clearly when getting in and out. They also provide a more homely feel to the wards. Thank you.

[Calling all knitters: blankets wanted for patients with dementia – SaTH](#)



Bereavement Cafe

A monthly opportunity to meet and chat with others who have been bereaved, hosted by members of local churches.

Second Monday of each month

2:30-4:00pm

Wellington Methodist Church





Albrighton Methodist Church

Regular church activities

Cafe Central

Every Thursday 10.00 to 12.00

Excellent coffee!

Meet with friends, old and new.



Sing a Long

2nd and 4th Fridays in the month.
2.00 to 3.30

Join in with "Old Time" songs
and songs from the musicals.
£2 per head.



Monthly Cafe

First Saturday in the month 10.00 to 12.00
With high quality bric-a-brac and
book stalls.



Open Door

First Tuesday in the month
7.30 to 9.00

Wide variety of speakers
ranging from singing, wildlife,
travel logs, health related.....



£2 per head. Speaker usually puts fees to a charity.

The **calling** of the
Methodist Church
is to respond to the
gospel of **God's love**
in **Christ** and to live
out its discipleship in
worship and mission

Our Calling

The **Methodist Church** 