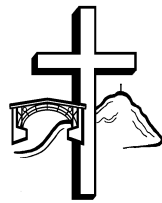


Telford Methodist Circuit Newsletter

12th September 2024

Our next Circuit Meeting will be at
Oakengates United Church
18th September at 7:30pm.



Albrighton Methodist Church

Saturday 21st September

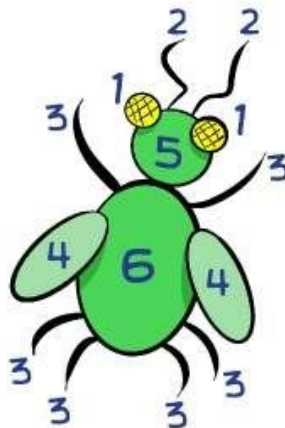
Between 2-5pm

£3 per adult

£2 per child

£7 per family

In aid of Say Yes



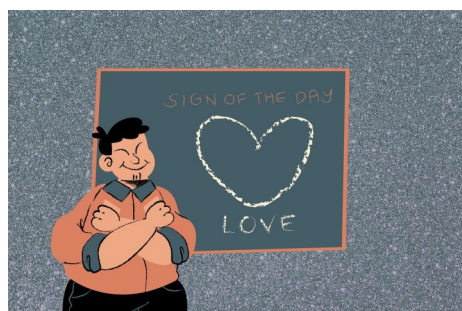
Help to learn Sign Language Wanted

Wellington has a young person who is profoundly deaf. Staff and the other young people would like to learn some signing.

Can anyone offer any help or suggestions?

If so can you please
contact the Circuit
Office.

With thanks,
Rev Roger Dunlop



Dear Members and Friends,
**HADLEY METHODIST CHURCH
IS MOVING TO HADLEY
COMMUNITY CENTRE, HIGH
STREET, HADLEY. TF1 5NL.**

**FROM 8th SEPTEMBER, 2024.
SERVICE STARTS @ 10 30 a m.**

Our new Minister Rev Adrian
Burdon will also join us in
September 2024.

Lay Preacher Carol Hughes
has volunteered to be our
Pastoral Supporter.

Everyone is welcome to join
us as usual for our Sunday
morning services at Hadley
Community Centre.

We look forward to
seeing you all.

Carol Hughes. (Pastoral Care)

Esi Ellis. (Senior Steward)



Heavenly Father, thank You for giving me another morning to rise and seek Your face! Lord, You are wonderful and I love spending time with You. You are the reason my life is as good as it is. I realise that today there are many directions I can go with the choices I make but I want to follow Your path for my life. Amen.

Please pray for...

Please keep Jean and Steve in your prayers.

Prayers please for Lorna who is recovering from surgery.

Lord Jesus, who went about doing good and healing all, we ask you to bless our friends who are sick. Give them the strength in body, courage in spirit, and patience in pain. Let them recover their health, so that, restored to the Christian community, they may joyfully praise Your name, for You live and reign for ever and ever. Amen.



Online Bible Study is on a Monday 1.3pm, Monday 7.00 pm and Wednesday 8.00pm

Enjoy a lively discussion as we explore the work of the Holy Spirit in Acts.

Please contact the Circuit office if you'd like to know more. If you're not sure why not give it a go?

All are welcome.

Circuit Prayer Space

Circuit Prayer Space on a Monday morning at 8:30am.

Val Smith is inviting you to a scheduled Zoom meeting.

Topic: Circuit Prayer Meeting

Time: This is a recurring meeting Meet anytime

Join Zoom Meeting

<https://zoom.us/j/96716434790?pwd=RTZZa210Q1ZOWCtLTWk3NHoyWDVlQTO9>

Meeting ID: 967 1643 4790

Passcode: 355690

Prayers please for Jack.....

Prayers please for Jack who lives in Telford, who has found out last week that he has four brain tumours and had an operation last Tuesday to get biopsies on the tumours. Jack has a wife and two young children.

**Breach Church at Dawley Christian
Centre on 11th September 2024**

Yesterday was our first Bread Church since Covid and it was a joyous occasion.

There's always that bit of anxiety when you try something new, or on this occasion, something we hadn't done for a very long time.. Wondering if people will come, will they enjoy it.. Will they like the format?

But there was no need to worry.. **God was with us...** Marcelle did a fabulous job of showing us how to make bread and Rev Nik was able to bring God into our conversations.

You can tell by all the smiling faces we all have a lovely time.

I can't wait until next time. Sharon :)

All you keen or would be bakers please

Join us for Bread Church

**Saturday 19th October 2024 between
9:30-1:30pm (with a light lunch)**

**On Wednesday 30th October 2024
between 1-4pm
(with delicious tea and scones)**

ALL ARE WELCOME



**Everything will be ready for you to make your
own bread and it's FREE!**

Please come along and give it a go.



Grants are available to individuals through the Gardening with Disabilities Trust to enable them to continue gardening despite advancing illness, age, or disability.

To apply for a grant, individuals must provide a letter from their doctor or other healthcare professional indicating their disability and a copy of another official document, such as a Personal Independence Payment (PIP) or a Blue Parking Badge.

The grants can be used for:

- Raised beds
- Poly Tunnels
- Greenhouses
- Tools
- Small-scale garden adaptations. e.g. access pathways.
- Plants or Shrubs
- Compost

The closing date for applications is the 30th November 2024.

More info:

Organisation name:

Gardening with Disabilities Trust



[Grants for Gardening - Gardening With Disabilities Trust](#)

“Who we help and what we pay for

We help individuals, and we love to help groups, because that makes our money go further. People with all kinds of physical or mental abilities, in all parts of the UK, have been awarded grants from the Trust.

We rarely (almost never!) pay for decking, and we **never** pay for clearing, cutting down trees, general maintenance, provision of a gardener or fencing.

You can check out our [Newsletter](#) and [Clients' stories](#) here for more inspiring ideas, or if you're ready to apply head straight to our straightforward [application process](#).

How it works

If your application is successful, we'll talk you through the process as to what will happen next. We usually pay the supplier directly when the work is completed, or send you vouchers which can be redeemed at a retailer close to you. We'll discuss with you the timing of the project, request photos of the work, and may even come and see it when it's completed by way of follow-up.”

Deadline:

30-11-2024

Would you like to get involved with Local Arrangements in your Church?

A Local Arrangement (LA) is a service of worship where there is no allocated minister or local preacher available to take responsibility for leading worship. If approached positively and with appropriate support and encouragement, Local Arrangements are an opportunity for building up the congregation and releasing new gifts and creativity for the glory of God

Local Arrangements: locally-led worship at its best unpacks what Methodist Standing Orders say about Local Arrangements and offers suggestions for encouraging people to get involved and be creative

Don't Panic!! The step-by-step guide to local arrangements offers some top tips, and links to other helpful resources

Traditionally there have been a number of services written by Methodist local preachers and ministers which are made available for use in particular situations in local churches. A selection of services are reproduced below for those who wish to use them:

<https://www.methodist.org.uk/for-churches/resources/leading-worship/resourcing-local-arrangements/>

To get involved please speak to one of the Stewards in your church. I'm sure they'd be delighted to have you as part of their team.



FAITH SPACE UPDATE

From September we are going to trial All Age services on Faith Space, on the 4th Sunday of every month. If you have some young friends or family members you might invite, please share our link with them and tell them how much we would love to see them! (Under 18s to have adult supervision and agreement)

See you on Sunday!

There is no longer Jew or Gentile, slave or free, male and female. For you are all one in Christ Jesus.

Galatians 3:28



The Dawley Christian Centre

Community Sensory Garden is taking shape but we are going to need a lot of plants, so if anyone has too many and would like to find new homes for them please let Sharon at Dawley Christian Centre know on 01952 505108 - Thank you :)

Thank you.





*You are invited to a
Variety Evening
Admaston Methodist
Church, Bratton Road*

Saturday 14th September

6.30 p.m.

*An evening of music, comedy,
singing, poetry, magic, drama.
Lots of Acts to make you smile*

*Please come along and bring a friend
Free entry, donations welcome for
refreshments*

*Car Park will be open opposite Admaston House
off Pemberton Road.*





BE THE CHANGE

9th—22nd September 2024 is Fairtrade Fortnight

Fairtrade facts and figures

50%

**of Fairtrade is owned by
farmers**

The assembly combines 50 percent producer representation with 50 percent national Fairtrade organisation representation.

€1bn

**Paid in Fairtrade premium
since 1994**

Since 1994, shoppers buying Fairtrade products have generated more than €1bn in Fairtrade Premium for farmers and workers.

4,800

**Fairtrade products in the
UK**

Think Fairtrade is just bananas and coffee? The full list of products includes flowers and gold, chocolate and tea, cotton and beauty.

Could you...

- Share a Fairtrade story?
- Enjoy Fairtrade refreshments at your church?
- Make it a church policy to only purchase Fairtrade tea, coffee and sugar?
- Pray for the work of Fairtrade or for a Fairtrade project in a particular country?
- Encourage one another to visit the Fairtrade website?
- Sign the 'Make your Mark' pledge?

You will find lots of resources and videos on their website

<https://www.fairtrade.org.uk/>



**FAIRTRADE
FOUNDATION**



Table Top Sale at
DAWLEY CHRISTIAN
CENTRE

on

Friday 20th September 2024
9.00am – 12 noon

**Come along and grab
a bargain.**

Hire a table for just £5!



SCARECROW FESTIVAL

SATURDAY 21ST SEPTEMBER

From 11 am - 4.30 pm

Sunday 22nd SEPTEMBER

From 1 pm – 3.30 pm

Follow the Scarecrow Trail starting at Legomery Methodist Church

Collect the Trail Sheet, follow the Trail

And as you go award points out of 10 for each one.

Once you have completed the Trail hand your completed form back in at the Church and at the end of the event points will be total and the owner of the winning Scarecrow will be awarded a Prize.



Refreshments, cake stall, Competitions etc Free scarecrow crafts.



Disability Awareness Sunday

...is **Sunday 22nd September 2024**, but any Sunday can be Disability Awareness Sunday! This year there's a whole Disability Awareness Week, starting on 15th September. Join the hundreds of churches across the UK to share about church disability inclusion.

DID YOU KNOW?

In a UK survey, 2 out of every 3 people said they felt 'uncomfortable' speaking with disabled people, and 3 out of every 4 disabled people reported experiencing negative attitudes or behaviour from others (Scope).

Together, we can change this!



Leading a Local Arrangement service?

There are lots of great **free** resources available to support you at

[Disability Awareness Sunday - Through the Roof](#)

Prayer

It's so easy, Lord, to behave in a way that isn't welcoming; to only want people like us; those who talk like us, think like us and act like us. It's hard to truly welcome those who challenge our preconceived ideas. Yet you call us to love all.

Forgive us for the times when we have been unwelcoming, for the times we haven't loved and for the times we have turned your children away. Forgive us, for just as those who we have turned away need the good news of your radical love, so do we.

Help us to remember Lord that you search us, and you know us. Each of us fearfully and wonderfully made. Each of us bearing your image. Each of us celebrating your love! Amen.



LEEGOMERY METHODIST CHURCH

(Hadley Park Road)

HARVEST CELEBRATIONS



Sunday 22nd September

11 a.m. Harvest Family Service led by Mr P Trenberth

4 p.m. Harvest Songs of Praise led by Rev R Dunlop.

4 p.m. Young Adventurers



Refreshments following both Services

We will be accepting tins, packet foods (not fresh items) suitable to be

Given to the Food Bank

Visit our website <https://sites.gppgle.com/view/leegomerymethodistchurch>





THE FILLING STATION

Haughmond
& Wrekin

23 September 2024
7:15pm for 7:30pm - 9pm



Haughmond & Wrekin Filling Station,
Rodington Village Hall, Shrewsbury,
SY4 4QS. 7:30 - 9pm, every 4th Monday.

Join us in September for Haughmond & Wrekin Filling Station, for worship, teaching, prayer, fellowship & great hospitality!

Future dates

28 Oct • 25 Nov

Main Speaker

Suzan Williams

Suzan is married to Darren and has four grown up children and six grandsons. She lives in Whittington and is the Rector of three parishes. She oversees the rural networks for New Wine and loves seeing what God is doing in our rural communities and beyond.



More info at...

www.thefillingstation.org.uk/station/haughmond-wrekin





Come along to our Repair Café event

If it's broken, don't bin it! Bring it to us and let us try to fix it

Saturday 28th September, 10am-2pm

Wellington Methodist Church,

New Street, Wellington, Telford, TF1 1LU

(Please bring any repairs before 12pm)



We Fix:

- Clothing, soft toys, home furnishings
- Ornaments
- Household & electrical items

Sorry no petrol driven items due to event safety

Our events are held on the last Saturday of the month at various locations, except December
A Charitable Incorporated Organisation registered in England charity number 1202453

Follow us on :



Advanced Safeguarding Course

Stephanie Bradley, Assistant District Safeguarding Officer is doing Advanced Safeguarding Training in the Telford Circuit on **Saturday 2nd November 2024**, starting at 10am at **Dawley Christian Centre**.

If you are unsure as to whether you are due to attend a course please contact either your Church Safeguarding Officer or Sharon in the Circuit Office on 01952 505108.

Registration will be from 9:30am with a prompt start at 10am, finishing around 2pm.

Please book directly with Stephanie by calling 07494 734 473 or email: StephanieBradley@birminghammethodist.org.uk

Thank you.

Safeguarding
Young people and vulnerable adults

Listen Carefully

Can you Listen carefully to someone who is troubled, listen without judgement and without telling them what they should do? Listen compassionately and try to understand the circumstances from their point of view and then help them to work out their own solution?

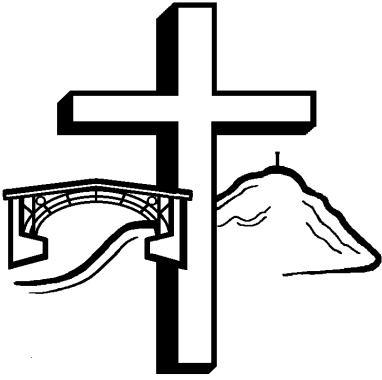
The people you will listen to come from many walks of life but there are often reasons why they come to the Dawley Food Bank apart from just 'running out of money at the end of the month'. They may be vulnerable victims of violence or other crime, they may have housing problems or be in debt. They may have mental health problems, have been released from prison or have addiction problems.

Your role would not be to find a solution for them but help them to find their own, maybe through you signposting them to other organisations or maybe by talking through the options that they have thought about. And just to keep them going, you can offer them a food parcel to last the next week.

If you can do these things and you are available to volunteer at Dawley Christian Centre on a Monday, Wednesday or Friday morning (10:30 to 12:30) then we would like to talk to you and invite you to see what we do at the food bank.

You can contact Sharon on 01952 505108. Thank you.





Telford Methodist Circuit

Part-time Circuit Safeguarding Officer

The Telford Methodist Circuit is seeking a Safeguarding Officer to support and oversee the Circuit's Safeguarding Practices.

We seek someone with the ability to lead and instruct on all aspects around Safeguarding at Circuit level. To support churches with their Safeguarding needs.

Applicants should have experience in Safeguarding within a volunteer or employed environment with a working knowledge of workplace IT systems.

12 hours per week

Salary: £7,488 per annum

For Job Description & Person Specification, please contact
circuitssupport@telfordmeth.org.uk

Coffee Morning at Cartway Methodist Church, Bridgnorth

On the 1st Saturday of each month between 10am –12 midday there is a Coffee Morning at Cartway Methodist Church.

There's going to be a great raffle,.

All are welcome.



Wellington Methodist Church

Are having All Age Drop-in Craft Sessions on the second Saturday of each month.

The sessions are FREE and start at 10am-11:45am.

You are welcome to drop in any time.

Everyone is welcome.



Coffee Mornings at Horsehay

**Every Wednesday:
10.30am - 12.00 noon**

**Join us for tea/coffee,
fellowship and lots of
chat and laughter!**



Ladies' Fellowship at Horsehay Second Tuesday of each month

in the vestry @2.30pm

ALL WELCOME - BRING A FRIEND!

Painting for Pleasure at Horsehay Methodist Church

Informal art groups (no tutor, but lots of chat and helping each other with tips and techniques). Whatever your skill level, if you enjoy drawing and/or painting, why not come and join us? Monday and Thursday mornings 10.00 - 12.30. £5.00 per session. Ring Dave on 01952 505942 for more info.



CRAFT AND CHAT

2ND & 4TH FRIDAYS EACH
MONTH 10-11.30

At Wellington Methodist Church
New Street Wellington Telford TF1 1LU
www.wellingtonmethodistchurch.co.uk
Contact Roger Jones 07808344374
Or the church office 250944

Bereavement Cafe

A monthly opportunity to meet and chat with others who have been bereaved, hosted by members of local churches.

Second Monday of each month

2:30-4:00pm

Wellington Methodist Church



Church Activities taking place in

Albrighton Methodist Church on a regular basis:



Monday (2nd and 4th Monday of the month) **Coffee and T4U 10-12** (A quiet coffee morning for people who want a bit of time out it's FREE!)

Open Door - First Tuesday of the Month - 7.30-9pm. The evening has a variety of speakers ranging from singing, talks about wildlife, travel logs, health related talks.....£2

Weekly, **Thursday cafe 10-12**

Friday (2nd and 4th Friday of the month) Sing a long
2-3.30pm (For anyone who likes to sing 'old time'
songs or from the musicals. £2)



Saturday morning 1st Saturday in the month 10-12. with bric-a-brac and bookstall.



NEW!!!! Board Games

Come and join the fun!

**The last Saturday of each month
10am-12noon. This is for all ages.**

£2 per adult, £5 per family.

You are welcome to bring your own game.

We have a **Quiet Corner** open for prayer/quiet reflection when there are church run events, located in the Meeting Room. Gill is available for anyone who wants to chat on a Thursday morning and has planned a 'Food for thought' time for a short while after

All are welcome

